

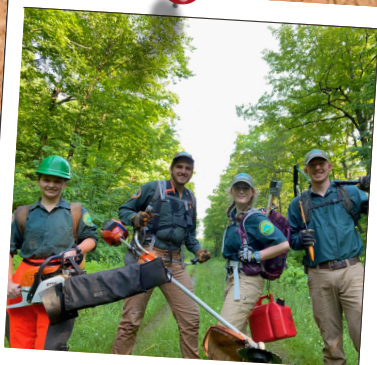
GREAT LAKES CLIMATE CORPS SUPERIOR WATERSHED PARTNERSHIP



**GREAT LAKES
CLIMATE CORPS**



**OTTAWA TRAIL
CREW**



**WILDFIRE RISK
REDUCTION CREW**



**GREAT LAKES TRIBAL
CONSERVATION CORPS**



**FALL EXTENSION
OPPORTUNITIES**



**RECENT PROJECT
LOCATIONS**

COMPENSATION & MORE

- Crew Leaders: \$20.00/hr
- Crew Members: \$18.00/hr
- Full-time, temporary, seasonal work
- Work trucks & gas provided
- Camping fees, meals & equipment provided
- Tools, materials & training provided
- Paid sick time

REQUIRED QUALIFICATIONS

- Available May 18 - August 14
- All positions based out of Marquette, MI (housing is not provided on weekends or during local projects)
- Comfortable tent camping weeknights up to 12 weeks
- Work well with others in a small group setting
- Capable of outdoor manual labor in adverse conditions
- Able to use hand & power tools safely
- Able to lift up to 50lbs and hike multiple miles per day
- Willing to travel throughout the region
- Proficient in oral & written communication
- Responsible, motivated & have a positive attitude

PREFERRED QUALIFICATIONS

All Positions

- Additional health & safety certifications
- Tree & plant identification knowledge
- Experience tent camping

Crew Leaders

- Supervisory experience
- Conservation, restoration, or recreation experience
- Experience using an iPad, Gaia, & Survey123

Great Lakes Tribal Conservation Corps

- Tribal members and descendants receive preference

Wildfire Risk Reduction Crew

- See supplemental job description for additional details
- Available May 18 - November 6 preferred

Ottawa Trail Crew

- Chainsaw use and maintenance experience
- Trail building experience preferred

NOW ACCEPTING APPLICATIONS!

WWW.SUPERIORWATERSHEDS.ORG/ABOUT/JOB-OPPORTUNITIES

GREAT LAKES CLIMATE CORPS

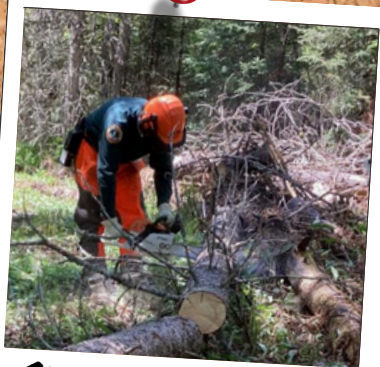
WILDFIRE RISK REDUCTION CREW



CONDUCT FIREWISE ASSESSMENTS



RECEIVE CHAINSAW CERTIFICATIONS



CLEAR HAZARDOUS TREES, LIMBS, BRUSH



CHIP BRUSH PILES



PROVIDE PUBLIC FIREWISE EDUCATION



BOOK APPOINTMENTS WITH HOMEOWNERS

ADDITIONAL INFORMATION

Crew Members on the GLCC Wildfire Risk Reduction Crew will be trained to perform critical climate adaptation work including wildfire risk assessments on structures and creating defensible space around them using Firewise methodology. The crew will visit homes, camps, or other structures in the wildland/urban interface to meet with landowners.

The crew will conduct risk assessments of their property and perform fuels reduction treatments as-needed using chainsaws, handsaws and brushsaws. The crew will receive chainsaw and tree felling training and certification with instruction on how to safely use all GLCC equipment. The crew may occasionally work with Superior Watershed Partnership (SWP) staff in chipping piles of removed hazardous fuels (limbs, brush, etc.) with a wood chipper.

The primary duties of this crew will be fire risk reduction, but you may be assigned other duties or projects as needed throughout the season. Expect to camp every night during the work week with the normal schedule being Monday-Friday. The schedule may occasionally be adjusted to four days per week (10 hour days) as needed.

The Crew Leader of the Wildfire Risk Reduction Crew will have all the duties mentioned above with the addition of: ensuring crew safety (PPE, proper procedures, etc.), project management/scheduling, completing data sheets, risk assessments, timesheets, and other paperwork as assigned. After an initial training period of a few weeks, the Crew Leader will then be expected to schedule fire assessments with homeowners utilizing a contact list and location map that will be provided by SWP staff.

NOW ACCEPTING APPLICATIONS!

WWW.SUPERIORWATERSHEDS.ORG/ABOUT/JOB-OPPORTUNITIES