

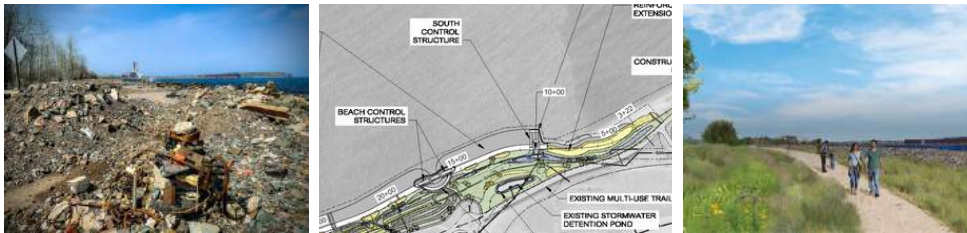


Coastal

Climate Resilient Projects & Planning



The Superior Watershed Partnership (SWP) collaborates with tribal communities and local units of government to identify, design, and implement climate resilient coastal projects. Great Lakes Climate Corps (GLCC) are deployed upon request to perform shoreline inventories, cleanup beaches, and restore natural coastal solutions. SWP technical staff assist communities with coastal planning and seeking grant funds.



SWP deploys buoys in the near shore waters of Marquette, Munising, and Grand Marais which provide publicly available, real-time weather and climate data. This information plays an important role in recreational and commercial maritime safety as well as climate and weather projections.



Green Infrastructure Solutions

The Superior Watershed Partnership and City of Marquette received \$2.5 million from the National Fish and Wildlife Foundation's National Coastal Resiliency Fund to restore nearly a mile of the City's Lake Superior shoreline to a native dune-swale ecosystem with coastal wetlands. These threatened ecosystems will once again provide benefits to wildlife like birds, butterflies, and other pollinators while also benefiting water quality and reducing stormwater pollution entering Lake Superior. The project will restore public access to a nearly a mile beach which has been blocked for decades by piles of rock with new trails planned for construction.

McCarty's Cove Beach Grass

