



Download a **free** audiobook today  
150,000+ audiobooks to choose from

**audible**  
an amazon company

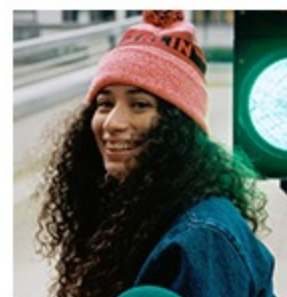
**TRY NOW**

## BREAKING NEWS» U.P. among areas to receive part of \$40 million for Michigan conservation projects

### Local-Region

- Front Page News
- Local-Region**
- Obituaries
- Spotlight
- Living Green
- Community
- Michigan News
- National News
- International News
- Student of the Week
- Worship This Week
- VIEW Front Page
- Virtual Newsroom
- Records
- Superior people
- Features
- 2014 Elections

### American Apparel Hats



→ Shop Now

/ News / Local-Region /

« Highway projects nearing com... Water focus of Sonderegger S...»

## Meetings set on monitoring of Eagle Mine

September 14, 2013

JOHN PEPIN - Journal Staff Writer (jpepin@miningjournal.net) , The Mining Journal

Save |

MARQUETTE - The Superior Watershed Partnership has scheduled a slate of meetings to help update the public on the group's ongoing environmental assessments of activities involving the Eagle Mine.

The meetings begin Tuesday in Big Bay. All of the meetings are scheduled from 7 to 8 p.m. Tuesday's session will be held at the Powell Township School.

Another meeting is set for Thursday at the Michigamme Township Hall at 202 W. Main St. in Michigamme. The third meeting will be Sept. 24 at the Baraga Lakeside Inn at 900 U.S. 41 in Baraga. The final session will be Sept. 26 at Lakeview Arena at 401 E. Fair Ave. in Marquette.

The partnership's monitoring - which is funded indirectly by Lundin Mining Co. - includes verification of the mining company's compliance with permit requirements for groundwater, surface water, wildlife and plant life and additional monitoring of other potential impacts, including changes to air quality.

The partnership is responsible for verifying environmental monitoring, independent air quality monitoring in Powell Township and any other additional monitoring based on community feedback. It is also responsible for public outreach that includes data sharing and community updates.

Partnership officials said in a news release attendees of the sessions will learn more about the community environmental monitoring program, can ask questions and provide input.

The partnership hosts the meetings, which are independent of the community forums held periodically by Lundin and previously by Rio Tinto.

The partnership describes itself as "an award winning Great Lakes non-profit organization that has set national records for pollution prevention and implements innovative, science-based programs that achieve documented environmental, economic and educational results."

In addition to attending the meetings, the public can also provide feedback on the monitoring program by calling the partnership at its office in Marquette at 228-6095, extension 20, or by visiting its community environmental monitoring website at: [www.cempmonitoring.org](http://www.cempmonitoring.org).

John Pepin can be reached at 906-228-2500, ext. 206. His email address is [jpepin@miningjournal.net](mailto:jpepin@miningjournal.net).

Save |

Recommend Be the first of your friends to recommend this.

+1 0

[Subscribe to Mining Journal](#)

### News, Blogs & Events

I am looking for:

SEARCH

in:

News, Blogs & Events  Web

**FREE LARGE 1-TOPPING PIZZA** WHEN YOU BUY ANY LARGE PIZZA

**ORDER NOW**

**PAPA JOHN'S**  
BETTER INGREDIENTS. BETTER PIZZA.

### Mapas y Direcciones

Busque Mapas e Imagenes Satelitales de Forma Automatica. ¡App Gratis!



### Sponsored From Around the Web



Do THIS Before Eating Carbs (Every Time)



1 Fruit That "Fights" Diabetes



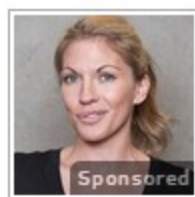
How New iPads are Selling for Under \$40



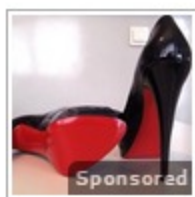
Secret Brain Pill Billionaires Are Using



Car Insurance Agents HATE This Trick



Shocking Website Reveals Anyone's Past Online, Take a Look



The Trick to Shopping Designer Brands for a Steal



Melt Your Fat Like Butter

**FREE CHECKED BAG\*** FOR ALL MILEAGE PLAN MEMBERS

**Alaska**

**FIND OUT MORE >**

\*Terms apply. See site for details