

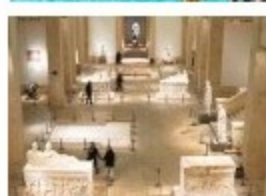


BREAKING NEWS» U.P. among areas to receive part of \$40 million for Michigan conservation projects

News

- News
- Sports
- Opinion
- Features
- Sections
- Extras
- Ads
- CU
- Services
- Service Directory
- Online Documents
- Ishpeming / Negaunee Map
- All Access E-Edition

View Travel Guide



/ News /

< Today in print

Suspect arraigned in bakery...

Tribe, USGS unite on water quality study

Watersheds of Yellow Dog, Salmon Trout rivers to be subject of four-year review

April 23, 2013

By JOHN PEPIN - Journal Staff Writer (jpepin@miningjournal.net) , The Mining Journal

Save |

L'ANSE - The U.S. Geological Survey has agreed to undertake a four-year water quality study of the Yellow Dog and Salmon Trout rivers watersheds at the request of the Keweenaw Bay Indian Community.

"Surface water and groundwater associated with these local drainage systems support many ecologically diverse habitats," said KBIC Tribal Chairman Warren Swartz in a news release. "Today, mineral exploration drilling, the construction and operation of a large industrial facility, the construction and enhancement of roads, a significant increase of heavy truck traffic, all in close proximity to tributary streams and wetlands of the Yellow Dog Plains, have created the potential for the introduction and migration of contaminants into this water-rich area.

"These activities may diminish the inherent value of the Community's 1842 Treaty rights and put the health and welfare of the public in jeopardy for generations to come."

Article Photos



A stretch of the Salmon Trout River north of Marquette C...

The Rio Tinto Eagle Mine is located on the Yellow Dog Plains. Several roads are being improved for mine truck traffic. Production is expected to begin in late 2014.

Rio Tinto announced last year it would indirectly fund a community environmental monitoring program of its mining, milling and transportation activities by the Superior Watershed Partnership.

Much of that water and air testing compares new independent results with those previously gathered by Rio Tinto. The USGS water monitoring on the plains would be new testing conducted from 2013-2016, with a report summarizing the results due to the tribe in 2017.

A formal request for USGS water monitoring was made by the tribe in March 2012. After agreeing on the scope of work to be performed, a USGS joint funding agreement was authorized by the KBIC Tribal Council last month.

The Huron Mountain Club has agreed to assist with funding and the Yellow Dog Watershed Preserve of Big Bay was instrumental in developing the program. That group has been collecting water quality information on the Yellow Dog Plains since 2002.

Swartz said the tribe contacted the federal agency because it was concerned about adverse ecosystem impacts. He said the USGS is "widely considered the nation's premiere science agency."

"The USGS Michigan Water Science Center agreed to conduct a baseline water quality investigation of the Yellow Dog Plains," Swartz said. "The USGS and Keweenaw Bay Indian Community have conducted cooperative investigations of water resources in and near the reservation for many years."

Swartz said since 2001, the agency and the tribe have operated a network of continuous record stream gauges and water quality monitors. The network has grown from one site in 2001 to six currently.

Swartz said discussions with the USGS about a potential cooperative water quality study of the Yellow Dog Plains began in the summer of 2011.

John Pepin can be reached at 906-228-2500, ext. 206.

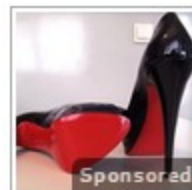
Save |

Recommend Be the first of your friends to recommend this.

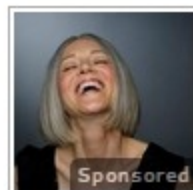
0

Subscribe to Mining Journal

Sponsored From Around the Web



The Trick to Shopping Designer Brands for a Steal



71-Year-Old Outsmarts Botox Surgeon, Looks 47



Do THIS Before Eating Carbs (Every Time)



Secret Brain Pill Billionaires Are Using



Shocking Website Reveals Anyone's Past Online, Take a Look



How New iPads are Selling for Under \$40



Car Insurance Agents HATE This Trick



1 Fruit That "Fights" Diabetes

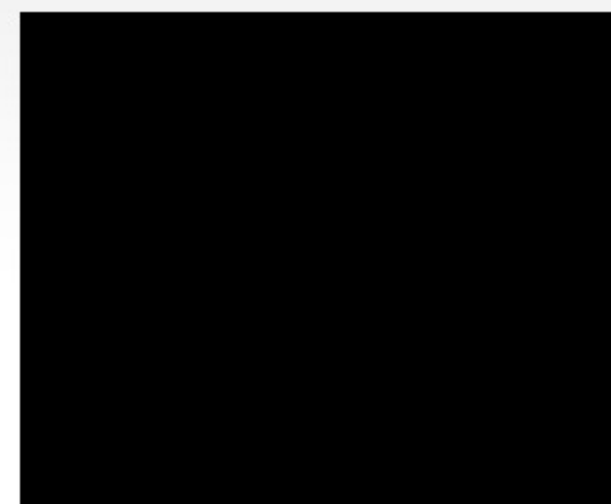
News, Blogs & Events

I am looking for:

SEARCH

in:

- News, Blogs & Events
- Web



Manage Water Rights, Usage Radio telemetry systems, monitor return to river flows, runoff data

Holiday Inn Express H Official Site. Book Direct & Save With Best Price Guarantee!

Mapas y Direcciones Busque Mapas e Imagenes Satelites de Forma Automatica. ¡App Gratis!